

Key Investor Information

This document provides you with key investor information about this Sub-Fund. It is not marketing material. The information is required by law to help you understand the nature and the risks of investing in this Sub-Fund. You are advised to read it so you can make an informed decision about whether to invest.

AMUNDI FUNDS SUSTAINABLE TOP EUROPEAN PLAYERS - M2 EUR

A Sub-Fund of the SICAV AMUNDI FUNDS

ISIN code: (A) LU1883870807

This UCITS has appointed Amundi Luxembourg SA, an entity part of Amundi group, as its Management Company

Objectives and Investment Policy

Seeks to increase the value of your investment over the recommended holding period through investment in Sustainable Investments pursuant to Article 9 of the Disclosure Regulation. Specifically, the sub-fund aims to contribute to reducing the carbon footprint of the portfolio.

The Sub-Fund invests at least 67% of its assets in equities of medium and large cap companies that are based or do most of their business in Europe and which are aligned with the Sub-Fund's sustainable investment objective of reducing the carbon footprint. The Sub-Fund's investible universe is predominantly listed European equities, and while it may invest in any area of the economy, at any given time its holdings may be focused on a relatively small number of companies with the portfolio constructed in such a way to have a carbon intensity which is aligned with the MSCI Europe Climate Change Index.

The Sub-Fund makes use of derivatives to reduce various risks, for efficient portfolio management and as a way to gain exposure (long or short) to various assets, markets or other investment opportunities (including derivatives which focus on equities).

Benchmark : The Sub-Fund is actively managed and seeks to outperform the MSCI Europe Index over the recommended holding period. The Sub-Fund is mainly exposed to the issuers of the benchmark, however, the management of the Sub-Fund is discretionary, and will invest in issuers not included in the benchmark. The Sub-Fund monitors risk exposure in relation to the benchmark however the extent of deviation from the Benchmark is expected to be material. Further, the Sub-Fund has designated MSCI Europe Climate Change Index as a reference benchmark for the purpose of the Disclosure Regulation. The Benchmark is a broad market index, which assesses and includes constituents according to environmental characteristics, and therefore is aligned with the environmental characteristics promoted by the Sub-Fund.

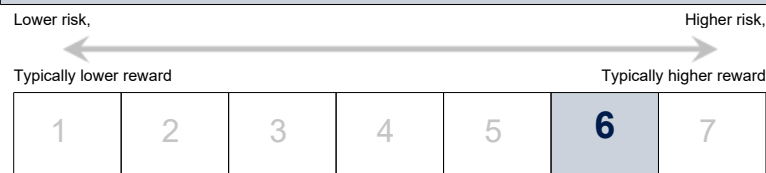
Management Process : The investment manager uses fundamental analysis of individual issuers to identify equities with superior long-term prospects as well as to pinpoint issuers' ESG prerogatives, in particular carbon intensity characteristics. The sustainable investment objective is attained by aligning the carbon footprint reduction objectives of the Sub-Fund with the MSCI Europe Climate Change Index. The portfolio carbon footprint intensity is calculated as an asset weighted portfolio average and compared to the asset weighted carbon footprint intensity of the MSCI Europe Climate Change Index. In addition, the Sub-Fund excludes companies on the basis of controversial behavior and (or) controversial products in accordance with the Responsible Investment Policy. The Sub-Fund seeks to achieve an ESG score of its portfolio greater than that of the investment universe.

The accumulation share automatically retains, and re-invests, all attributable income within the Sub-Fund; thereby accumulating value in the price of the accumulation shares.

The minimum recommended holding term is 5 Years.

Shares may be sold or redeemed (and/or converted) on any dealing day (except otherwise stated in the prospectus) at the respective dealing price (net asset value) in accordance with the articles of incorporation. Further details are provided in the prospectus of the UCITS.

Risk and Reward Profile



The risk level of this Sub-Fund mainly reflects the market risk arising from investments in European equities.

Historical data may not be a reliable indication for the future.

Risk category shown is not guaranteed and may shift over time.

The lowest category does not mean 'risk free'.

Your initial investment does not benefit from any guarantee or protection.

Important risks materially relevant to the Sub-Fund which are not adequately captured by the indicator:

- Credit risk: represents the risks associated with an issuer's sudden downgrading of its signature's quality or its default.
 - Liquidity risk: in case of low trading volume on financial markets, any buy or sell trade on these markets may lead to important market variations/fluctuations that may impact your portfolio valuation.
 - Counterparty risk: represents the risk of default of a market participant to fulfil its contractual obligations vis-à-vis your portfolio.
 - Operational risk: this is the risk of default or error within the different service providers involved in managing and valuing your portfolio.
- The occurrence of any of these risks may have an impact on the net asset value of your portfolio.

Charges

The charges you pay are used to pay the costs of running the Sub-Fund, including the costs of marketing and distributing it. These charges reduce the potential growth of your investment.

One-off charges taken before or after you invest

Entry charge	None
Exit charge	None
Conversion charge	None

This is the maximum that might be taken out of your money before the proceeds of your investment are paid out.

Charges taken from the Sub-Fund over a year

Ongoing charges	0.81%
Charges taken from the Sub-Fund under certain specific conditions	
Performance fee	None

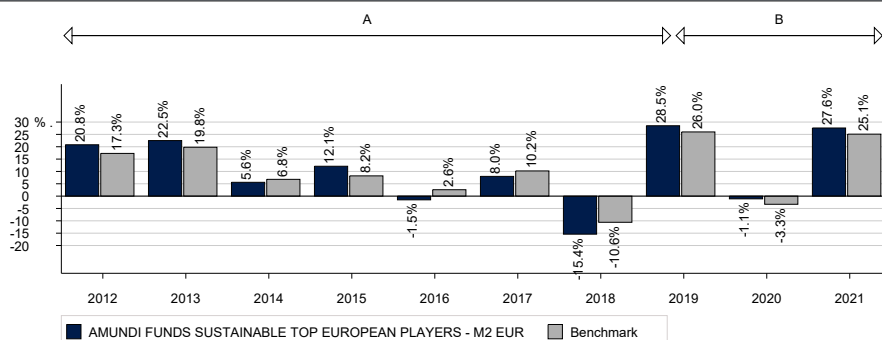
The **entry** and **conversion charges** shown are maximum figures. In some cases you might pay less - you can find this out from your financial adviser.

The **ongoing charges** figure is based on expenses for the year ending June 30, 2021. This figure may vary from year to year. It excludes:

- Performance fees,
- Portfolio transaction costs, except in the case of an entry/exit charge paid by the Sub-Fund when buying or selling units in another collective investment undertaking.

For more information about charges, please see charges paragraph of the prospectus of the UCITS, which is available at: www.amundi.com.

Past Performance



The chart has a limited value as a guide to future performance. The annualised performances displayed in this diagram are calculated net of all charges taken by the Sub-Fund. The Sub-Fund was launched on June 7, 2019. The Share Class was launched on June 7, 2019. The reference currency is the Euro.

A : The Sub-Fund was created to absorb AMUNDI FUNDS II TOP EUROPEAN PLAYERS. Performance is based on that of the absorbed Sub-Fund, which pursued the same investment policy, managed by the same investment management team, and adopted a fee structure with total ongoing charges lower by more than 5% than those of the Sub-Fund.
B : Performance of the Sub-Fund since its launch date.

Practical Information

Name of the depositary: CACEIS Bank, Luxembourg Branch.

Further information about the UCITS (prospectus, periodical reports) can be obtained in English, free of charge, at the following address: Amundi Luxembourg, 5, Allée Scheffer, L-2520 Luxembourg.

The details of the up-to-date remuneration policy, including, but not limited to, a description of how remuneration and benefits are calculated, the identity of persons responsible for awarding the remuneration and benefits are available by means of the following website: <https://www.amundi.lu/retail/Local-Content/Footer/Quick-Links/Regulatory-information/Amundi> and a paper copy will be made available free of charge upon request.

Other practical information (e.g. latest net asset value) can be obtained on the internet site www.amundi.com.

The UCITS contains a large number of other Sub-Funds and other classes which are described in the prospectus. Conversion into shares of another Sub-Fund of the UCITS may be made, subject to the conditions of the prospectus.

Each Sub-Fund corresponds to a distinct part of the assets and liabilities of the UCITS. As a consequence, the assets of each Sub-Fund are exclusively available to satisfy the rights of investors in relation to that Sub-Fund and the right of creditors whose claims have arisen in connection with the creation, the operation or the liquidation of that Sub-Fund.

This document describes a Sub-Fund of the UCITS. The prospectus and periodical reports are prepared for the entire UCITS named at the beginning of this document.

The Luxembourg tax legislation applying to the UCITS may have an impact on the investor's personal tax position.

Amundi Luxembourg SA may be held liable solely on the basis of any statement contained in this document that is misleading, inaccurate or inconsistent with the relevant parts of the prospectus for the UCITS.

This UCITS is authorised in Luxembourg and regulated by the Commission de Surveillance du Secteur Financier, Luxembourg (www.cssf.lu).

Amundi Luxembourg SA is authorised in Luxembourg and regulated by the Commission de Surveillance du Secteur Financier, Luxembourg.

This key investor information is accurate as at February 11, 2022.